

READ SAFETY DIRECTIONS BEFORE OPENING OR USING



## PLANT GROWTH REGULATOR

ACTIVE CONSTITUENT: 20 g/L 6-BENZYLADENINE

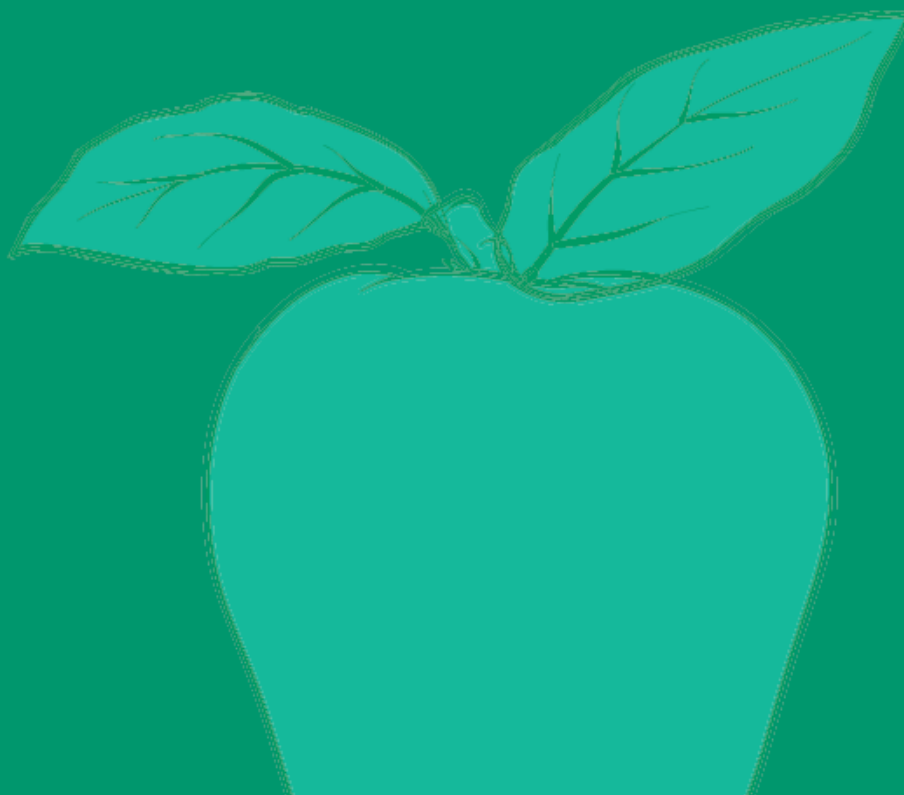
A Water Soluble Plant Growth Regulator For Fruit  
Thinning and Improvement of Fruit Size of Apples as  
per DIRECTIONS FOR USE table

Batch No.: As marked

Date of Manufacture: As marked

SAMPLE

SAMPLE



**fine**

Fine Agrochemicals Limited  
Hill End House  
Whittington  
Worcester  
WR5 2RQ UK  
T: +44 1905 361800  
F: +44 1905 361810  
E: [enquire@fine.eu](mailto:enquire@fine.eu)  
[www.fine.eu](http://www.fine.eu)

Distributed by:



Elders Rural Services Australia Limited,  
ABN 72 004 045 121,  
80 Grenfell Street, Adelaide SA 5000  
Phone: (08) 8425 4863  
[www.elders.com.au](http://www.elders.com.au)

Exilis® is a registered trademark  
of FINE Agrochemicals Ltd., UK.

Contents: 10 Litres  
APVMA APPROVAL NUMBER: 61780/56649

EX/AU/10L/16F

**DIRECTIONS FOR USE:**

Restrains:

DO NOT apply when maximum daily temperature is likely to be less than 15°C.

DO NOT apply later than 30 days after full bloom.

**APPLICATION DOSEAGE RATES**

Crop:	Rate water:	Critical Remarks:
<b>Apple varieties:</b> Golden Delicious, Red Delicious, Gala, Pink Lady Fuji, Sundowner	9 L/ha in a minimum of 1200 L/ha	Precede the EXILIS® application with a primary thinner application at bloom. Apply EXILIS® as a follow-up spray when the king fruitlets are between 7 - 10 mm in diameter, typically 10 to 25 days after full bloom. Spray on a day when the predicted daily maximum temperature exceeds 15°C. Increase water volume as canopy density increases.

**NOT TO BE USED FOR ANY PURPOSE OR IN ANY MANNER CONTRARY TO THIS LABEL UNLESS AUTHORISED UNDER APPROPRIATE LEGISLATION.**

**WITHHOLDING PERIOD:**

**NOT REQUIRED WHEN USED AS DIRECTED.**

**GENERAL INSTRUCTIONS:**

EXILIS® is a secondary thinner designed for use on apple trees already treated at or about full bloom with a primary thinner such as NAA. EXILIS® must be absorbed by the plant to be effective. Optimum thinning results will be achieved on vigorous, healthy trees when sprayed under good absorption conditions. High relative humidity and slow drying conditions favour maximum absorption. Addition of a non-ionic wetting agent may improve coverage and uptake. Do not apply EXILIS® to low vigour trees, or trees under stress from drought, winter injury etc. Do not apply EXILIS® when the air temperature is lower than 10°C or greater than 30°C. Rapid drying conditions should be avoided. Applications in the morning or evening may be preferable. Average daytime temperatures exceeding 15°C for the two days following application are considered important for good thinning. High temperatures (+28°C over this period) may result in excessive thinning.

Best thinning results are obtained when EXILIS® is applied during a period of uninterrupted growth of the fruitlets. Delay EXILIS® application after rain until flower parts and leaves are free of surface droplets. Rainfall within 6 hours of application may reduce the expected thinning response. Thinning responses are normally to be observed within 10 to 14 days of application.

**MIXING:**

EXILIS® mixes readily with water. Add the required amount of EXILIS® to a clean spray tank half filled with water. Agitate while filling the tank with water to the required level. EXILIS® spray solutions should be used within 24 hours after mixing. A buffered wetting agent (non-ionic) may improve coverage. When a buffered wetting agent is used, it should be added to the tank prior to the addition of EXILIS®.

It is advisable to add a buffer to alkaline spray water to reduce the pH below 7.

**APPLICATION:**

Apply in sufficient water volume to achieve thorough and even coverage of leaves and fruitlets. Apply as a uniform fine mist spray so that 85% of the spray volume is directed into the upper two thirds of the trees under calm weather conditions. Ensure that lower leaf surfaces are also covered.

Apply EXILIS® as a follow-up spray when the king fruitlets are between 7 to 10 mm in diameter, typically 10 to 25 days after full bloom.

Use a properly calibrated sprayer that ensures uniform and complete coverage of all foliage and blossoms. Spray volume should be adjusted to tree size and density.

Apply EXILIS® on a day when the predicted daily maximum temperature exceeds 15°C.

**COMPATIBILITY:**

Do not apply EXILIS® in combination with pesticides, fertilizers or other plant growth regulators. For alkaline water refer to mixing.

**PROTECTION OF CROPS, NATIVE AND OTHER NON-TARGET PLANTS:**

Do not apply under weather conditions, or from spraying equipment, that may cause spray to drift onto nearby susceptible plants/crops or pastures.

**PROTECTION OF WILDLIFE, FISH, CRUSTACEA AND ENVIRONMENT:**

Do not contaminate streams, rivers or waterways with chemical or used container.

**STORAGE AND DISPOSAL;**

**KEEP OUT OF REACH OF CHILDREN**

Store in the closed original container in cool, well ventilated area out of direct sunlight.

Clean applicator after use and dispose of wash water where it will not contaminate food, grazing areas, rivers or dams.

Triple or preferably pressure rinse containers before disposal. Add rinsings to spray tank. Do not dispose of undiluted chemicals on site. If recycling, replace cap and return clean containers to recycler or designated collection point.

If not recycling, break, crush, or puncture and deliver empty packaging for appropriate disposal to an approved waste management facility. If an approved waste management facility is not available, bury the empty packaging 500 mm below the surface in a disposal pit specifically marked and set up for this purpose clear of waterways, desirable vegetation and tree roots, in compliance with relevant Local, State or Territory government regulations. DO NOT burn empty containers or product

**SAFETY DIRECTIONS:**

Harmful if swallowed. Will irritate the eyes and skin. Avoid contact with eyes and skin.

When opening the container and preparing product for use wear cotton overalls buttoned to the neck and wrist and washable hat, elbow-length PVC gloves and face shield or goggles.

When using the prepared spray wear cotton overalls buttoned to the neck and wrist and washable hat and elbow-length PVC gloves.

If product gets in the eye, wash eye immediately with water.

After use and before eating, drinking or smoking, wash hands, arms and face thoroughly with soap and water. After each day's use, wash gloves, face shield or goggles and contaminated clothing.

**FIRST AID:**

If poisoning occurs, contact a doctor or Poisons Information Centre (Phone: 13 11 26)

**MSDS:**

Additional information is listed in the Material Safety Data Sheet.

**PRODUCT WARRANTY CONDITIONS AND LIMITATION OF LIABILITY:**

Fine Agrochemicals Limited ("FINE") warrants that this Product conforms to the specifications indicated on this label. FINE disclaims all other warranties, express or implied, including but not limited to warranties of merchantability and fitness for a particular purpose.

It is impossible to eliminate all risks associated with this Product. Plant injury, lack of performance or other unintended consequences may result because of factors such as abnormal weather conditions, presence of other materials, the manner of application, use of the Product other than in strict accordance with this label's instructions or other factors, all of which are beyond the control of FINE or the seller. To the extent consistent with applicable law, all such risks shall be assumed by the Buyer.

FINE's liability under this label shall be limited to the amount of the purchase price or, at the election of FINE, the free replacement of the Product. FINE disclaims any liability whatsoever for special, incidental or consequential damages resulting from the handling or use of this Product.

©Fine Agrochemicals Ltd. All rights reserved.

EX/AUS/10L/13B